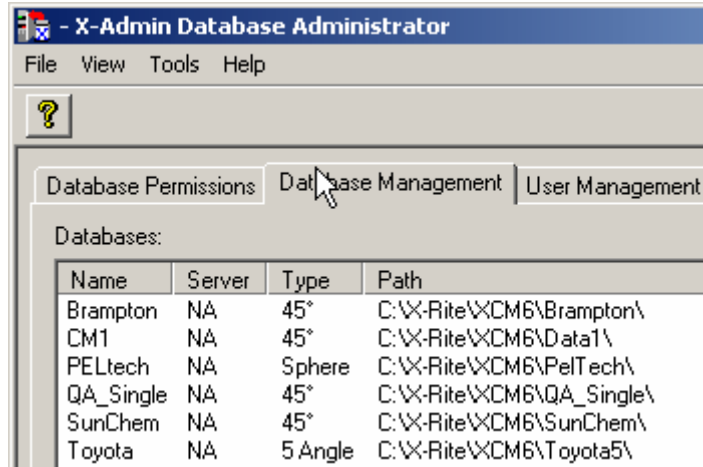


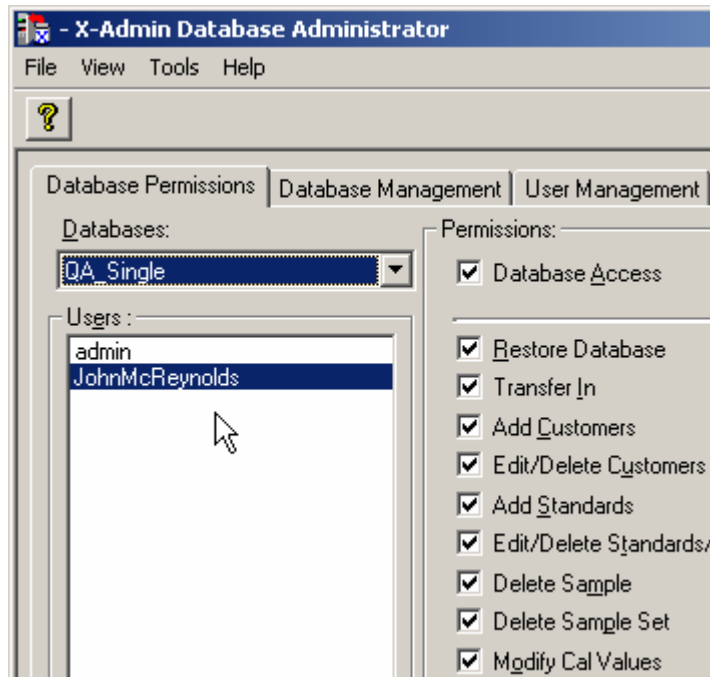
## Configuring XAdmin

*XAdmin* manages database access. This includes who can do what with which data. It also includes management of all transactions. For this to operate, *XAdmin* must be the only software that accesses the files. A common error is for users to “map” a drive from the client to the database - - bypassing the server and its protections. Below are the details needed to correctly point to a database via the server.

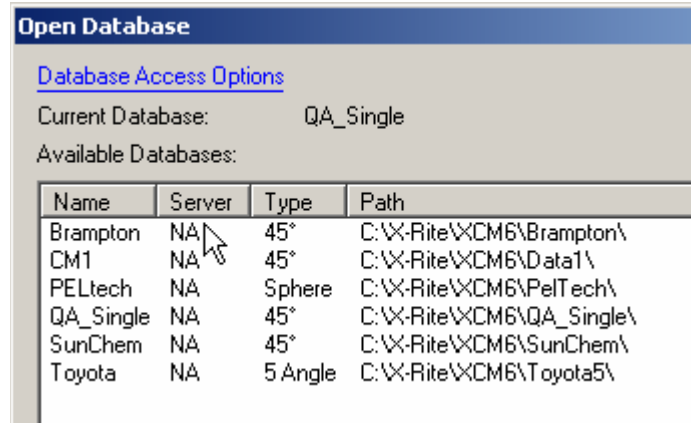
1. First ensure that *XAdmin* is aware of the database file and the users.



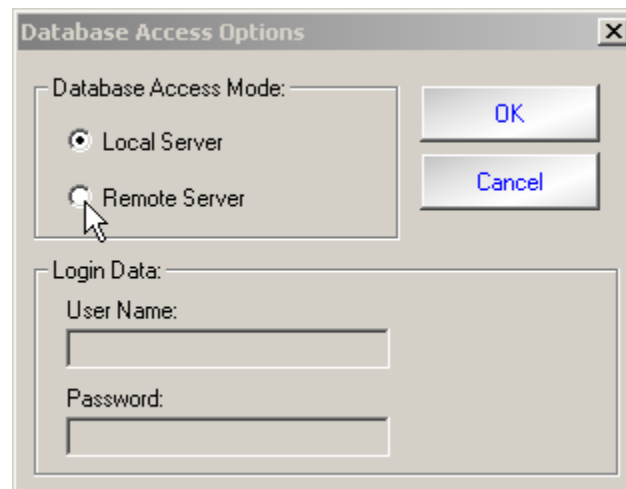
And that the user has permissions!



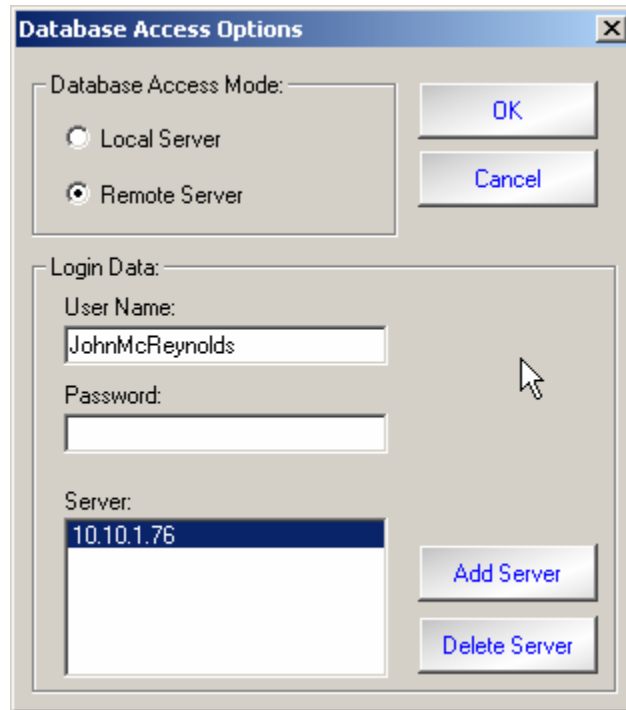
2. Then, at the client, select “**Database Access Options**”.



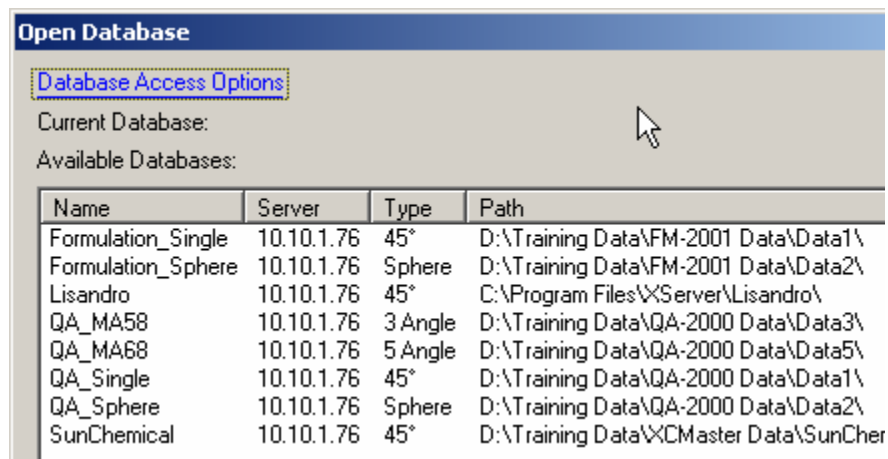
Select “**Remote Server**”



3. If not already done, add the server to list of “Server:” You may use IP address or name if DNS is functional on your network. TCP/IP and NetBIOS required.

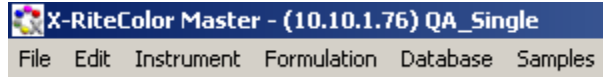


Enter Password &...



Note the server’s IP address in the screen grab above! If you are not seeing a server name or address here (see item # 2 above) then you have not set the system up properly.

4. When you select a database you will see the server name as well.



Good luck. Hope the notes help.

John McReynolds

[jmcrey19@xrite.com](mailto:jmcrey19@xrite.com)