

# ECM

Can I measure haze with my spectrophotometer?

## Tech Brief

*Enterprise Color Management (ECM) – a concept that provides the right tools and technologies to simplify color control on a global scale and ensure color consistency among suppliers.*

### Can I measure Haze with my spectrophotometer?

To obtain a true haze measurement requires a haze meter (ASTM D1003). It is possible, however, to use a sphere geometry spectrophotometer capable of transmission measurements to obtain an index with good correlation to a haze meter.

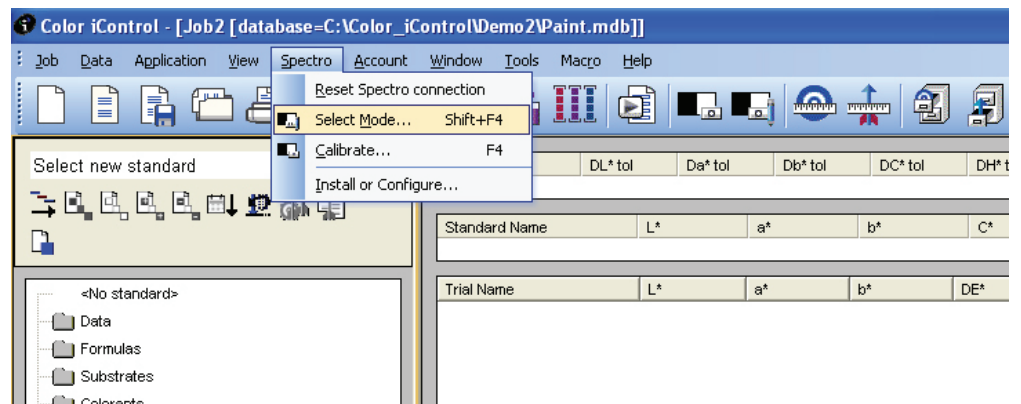
Set up the spectrophotometer (SCI, UVEX, LAV lens and aperture) for transmission measurements to be made by measuring the samples at the sphere and calibrate it for this condition. Generally, the calibration of this condition requires a white reflectance standard (Spectralon Plaque) and a black trap (open port).

Next measure the sample at the sphere with the white reflectance standard (Spectralon Plaque)

### How can I measure haze using Color iControl?

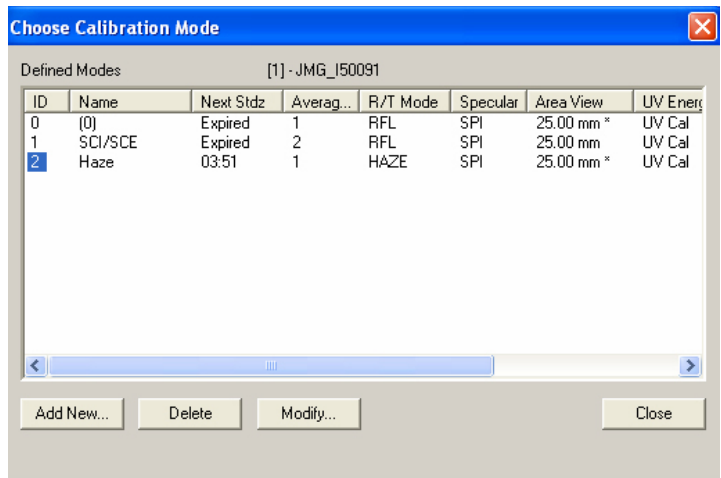
This measurement option is available with the ColorEye 3000/3100, Color i5, and Color i7.

1. Open a new job and go to the Spectro menu, then choose Select Mode.



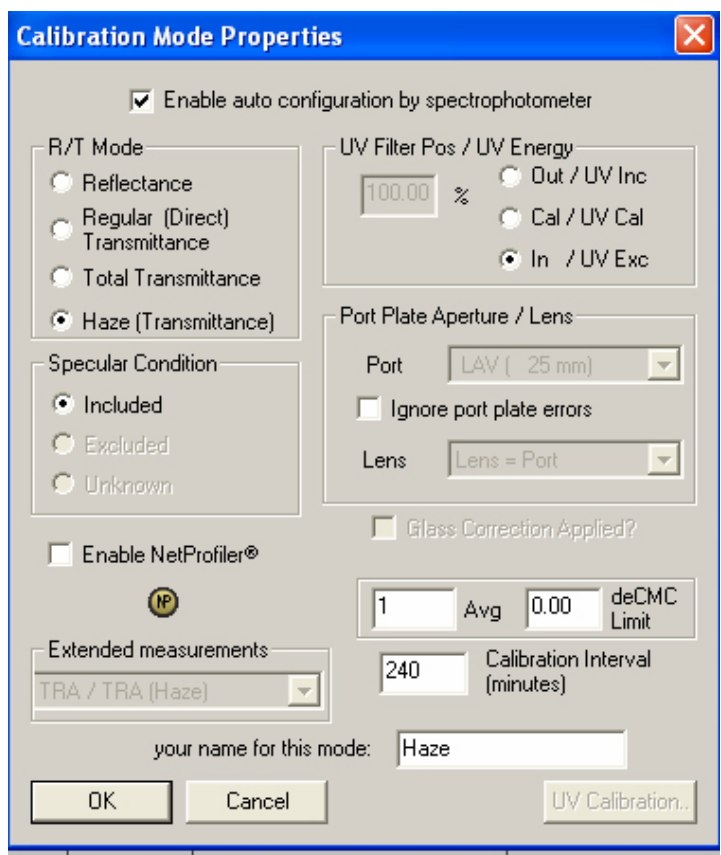
*A sphere geometry spectrophotometer capable of transmission measurement can correlate well to an actual haze meter*

2. In the **Choose Calibration Mode** window click the **Add New** button down in the bottom left corner.



3. This opens the **Calibration Mode Properties** box.

4. Make the following settings:



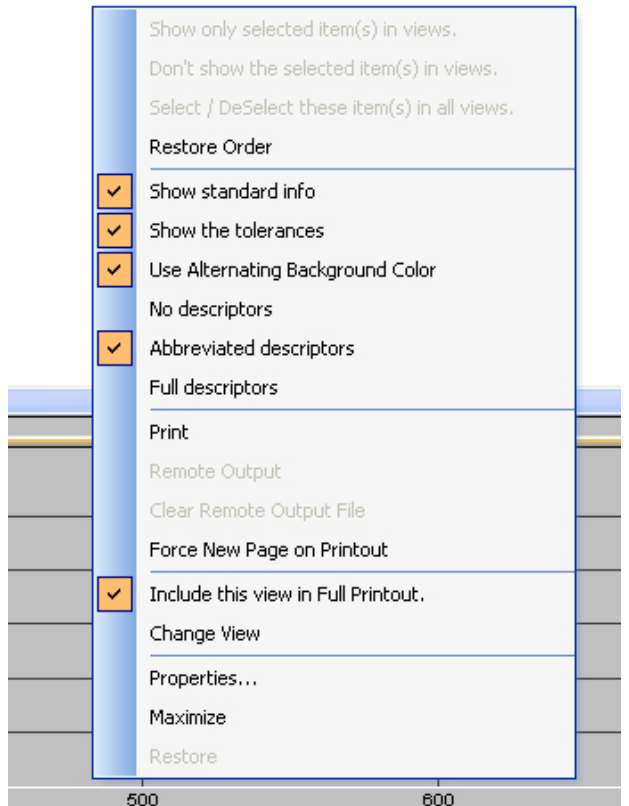
5. Click **OK** to close this window.

6. Click **Close** on the **Choose Calibration Mode** window.

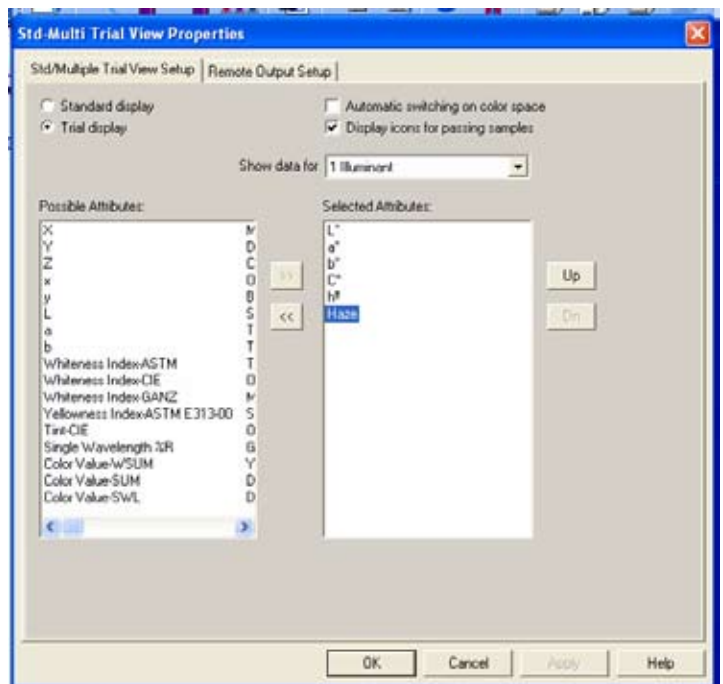
*The human visual system perceives color differences non-uniformly making it more sensitive to some color differences while less sensitive to others.*

7. Now in the **Standard/Multi-Trial View** right click and select **Properties**.

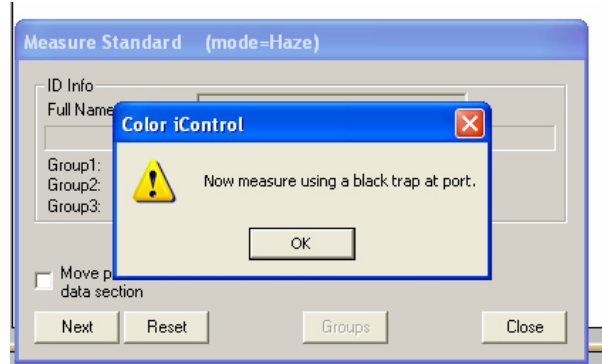
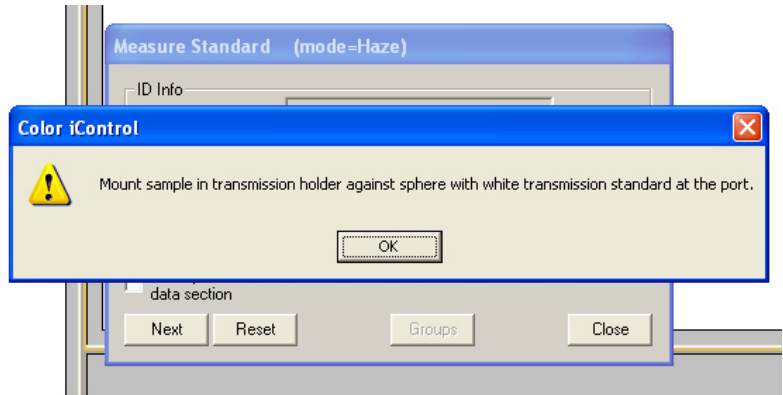
	1.41	1.45	U.91	U.75	U.1
a*					
b*					
C*					
h°					
	-4.36	35.15	35.42	97.08	
a*					
b*					
DE*					
DL*					
Da*					



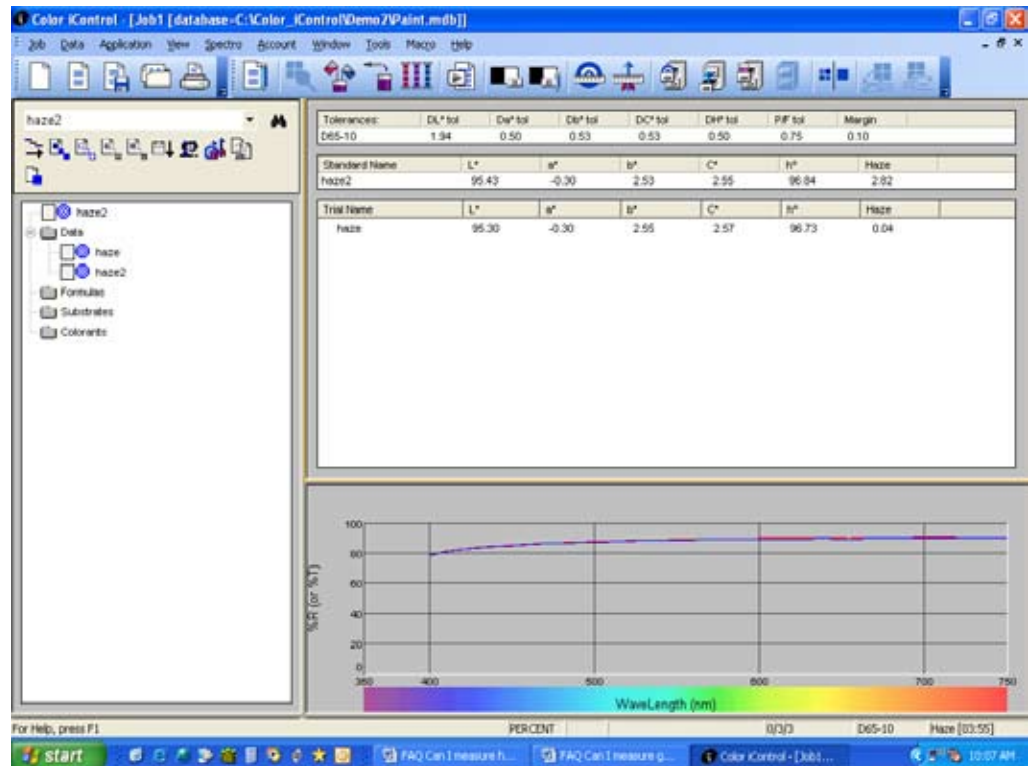
8. Add the **Haze** attribute to both the standard and the trial.



9. Measure a standard or a trial as directed.



10. The Correlated Haze value will be displayed.



*NetPalette, an Internet-based application, lets specifiers collaborate on color directly with suppliers by providing digital color samples accompanied by color data. Digital samples drastically reduce the time and expense involved with creating and shipping physical samples.*

Call 866-285-3463

[www.gretagmacbeth.com](http://www.gretagmacbeth.com)