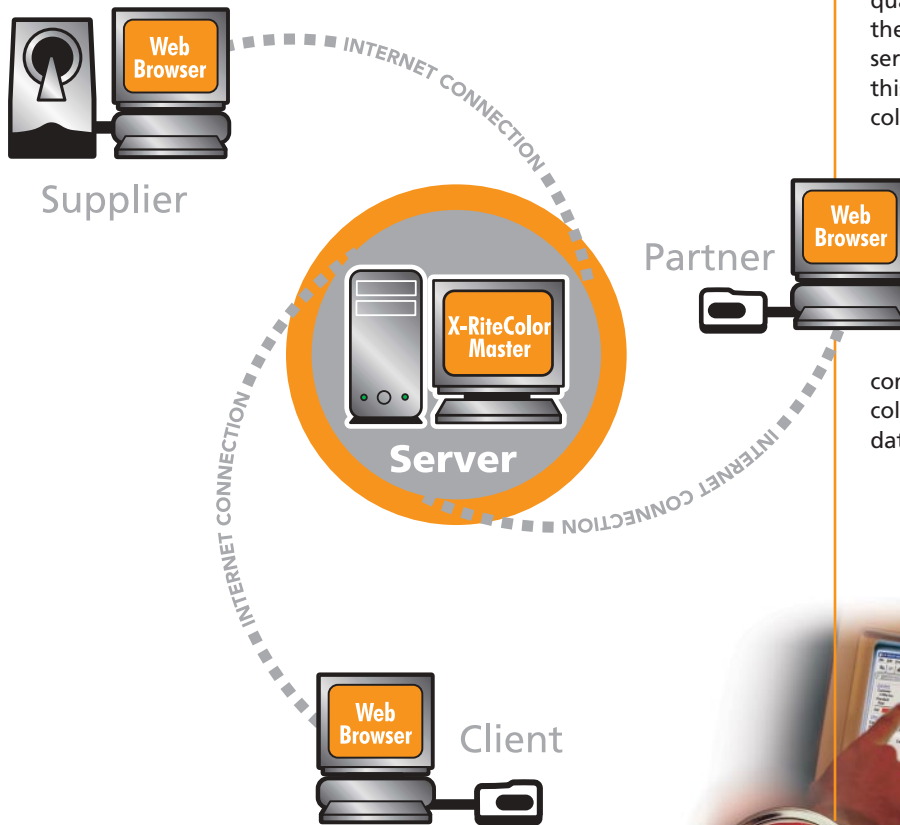




# X-RiteColor® Master Web Edition

Server-Based  
Color Formulation  
and Quality Assurance  
Software



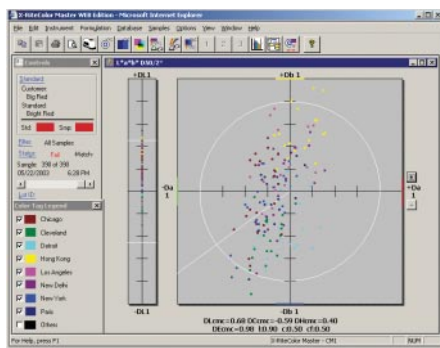
X-RiteColor® Master Web Edition is the first browser-based formulation and quality assurance software package in the industry. Created to work in a server-based computing environment, this means that the software and all color data files reside on a central server rather than on a users PC. This centralized data serves multiple locations, anytime, anywhere in the world. Ideal for companies with multiple locations here or around the globe. Users in different locations can accurately communicate, formulate and assure color accuracy using one central database.



## EXPERIENCE

the measurable color difference.™

# X-RiteColor® Master Web Edition



## Two Versions

X-RiteColor® Master Web Edition relies on a Windows® 2000 server and Microsoft Terminal Services technology. It is available in two versions:

- QA-Master II – a less costly version for users requiring quality assurance but not formulation capabilities
- Formulation-Master III – for users requiring full QA and formulation capabilities

These two versions provide the full range of X-RiteColor Master functions. Each software program contains administrative tools that allow the system administrator to customize the capabilities each user can access. Corporations can therefore limit the tools available to, for example, suppliers or less experienced users.

## Server-Based Computing

In the traditional client/server software model, the client computers (networked PCs) house software programs, and the server is simply a network resource manager. In server-based computing, however, the software is not loaded on client PCs. Instead, it runs only on the server computer. A client computer sends user data requests to the server, and the server sends back the graphics that the user sees on-screen. With the X-RiteColor Master Web Edition, clients use the Internet (via Internet Explorer) to access the server and view screen data.

## The Advantages

For larger corporations with a central IT department, X-RiteColor Master Web Edition provides a number of advantages over the original X-RiteColor Master software. These include:

- *Easier administration.* The application is installed only once, on the database server. Since this server is typically located in the corporate IT department, the application is administered, maintained and supported from a single, central location. This is important, for example, for virus prevention, potential bug fixes and future software upgrades.
- *Fewer demands on PCs.* Since the real “work” is done on the server and no large software package is running on the user PCs, the client computers can perform their tasks without much computing horsepower.
- *Worldwide accessibility.* Users across the country and around the globe can connect to the central server. All they need is a user name/password, an Internet connection and a Windows®-based PC running Microsoft Internet Explorer 6.0 or higher. This is especially appealing to international corporations with users at multiple locations.
- *Controlled, standardized data.* With all corporate color standards residing on a central database server, all users at all locations will be viewing and using the same data. X-RiteColor Master Web Edition maintains the quality of corporate data, preventing discrepancies in color standards.
- *Speed.* Since the software runs on a dedicated server, users will generally experience faster performance than if the application were loaded on their hard drive. However, speed is also determined by the type and quality of the Internet connection.
- *Economy.* For companies with multiple users, the Web Edition decreases the cost of software ownership.

## Instrument support

The X-RiteColor Master Web Edition software supports the following instruments: SP62, SP64, SP68, 962, 964, MA68II, 938, 939, 968, 530 and X-RiteColor Premier 8000 Series.

## System/Application Requirements

### Server Software Requirements

- Windows 2000 server with Terminal Services
- Windows 2000 server Client Access Licenses (CALs) and Terminal Server Client Access Licenses (TSCALs) as required for each client by Microsoft
- High-speed Internet connection
- Web hosting capability

### Client Requirements

- Windows 98SE, 2000 Professional, XP Professional
- Adobe® Acrobat® Reader®
- Microsoft Internet Explorer 6.0 or greater
- Serial port (or USB) for instrument communications
- Connection to the server (Internet or intranet)
- Firewall must open terminal services port 3389

### Server Hardware Requirements

- Server requirements are dependent on the number of seats needed. Contact your IT department or X-Rite representative.

### Microsoft Licensing

X-RiteColor Master Web Edition uses Microsoft's Terminal Services system. Each computer using Terminal Services should be licensed through Microsoft. (For client computers running Windows 2000, no additional licenses are necessary.)



xrite.com

**X-RITE WORLD HEADQUARTERS**  
Grandville, Michigan USA  
(616) 534-7663  
(800) 248-9748  
FAX (616) 534-8960

**X-RITE INTERNATIONAL, B.V.**  
The Hague  
The Netherlands  
(31) 70-3538132  
FAX (31) 70-3538333

**X-RITE LATIN AMERICA**  
Hollywood, Florida USA  
954-927-4979  
FAX 954-927-4979

**X-RITE LTD.**  
Poynton, Cheshire  
United Kingdom  
44 (0) 1625 871100  
FAX 44 (0) 1625 871444

**X-RITE MEDITERRANÉE**  
Massy, France  
33 1-6953-6620  
FAX 33 1-6953-0052

**X-RITE ITALY S.R.L.**  
Origgio (VA), Italy  
(39) 02-967-34266  
FAX (39) 02-967-30681

**X-RITE GmbH**  
Köln, Germany  
(49) 2203-91450  
FAX (49) 2203-914519

**Vyskov, Czech Republic**  
(00) 420 517-320-331  
FAX (00) 420 517-320-335

**X-RITE INTERNATIONAL TRADING LIMITED**  
Shanghai, PR China  
86-21-6427-2426  
FAX 86-21-6427-5816

ISO 9001  
Certified

**X-RITE ASIA PACIFIC LTD.**  
Quarry Bay, Hong Kong  
(852) 2-568-6283  
FAX (852) 2-885-8610

**Tokyo, Japan**  
81-3-5439-5971  
FAX 81-3-5439-5972

INFORMATION PROVIDED IN THIS DOCUMENT IS PROVIDED “AS IS” WITHOUT WARRANTY OF ANY KIND, EITHER EXPRESSED OR IMPLIED, INCLUDING BUT NOT LIMITED TO THE IMPLIED WARRANTIES OF MERCHANTABILITY AND/OR FITNESS FOR A PARTICULAR PURPOSE. The user assumes the entire risk as to the accuracy and the use of this information. All text must be copied without modification and all pages must be included. All components of this information must be distributed together. This

information may not be distributed for profit. © X-Rite, Incorporated 2003. X-Rite® is a registered trademark of X-Rite, Incorporated. Other brand and product names are trademarks of their respective holders. All trademarks may be registered in the United States and/or other countries. Product design and specifications subject to change without notice.

L10-238 (7/03) Printed in U.S.A.