



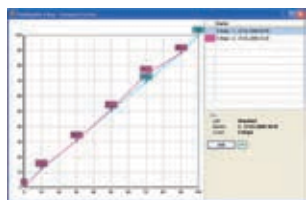
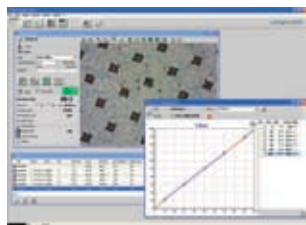
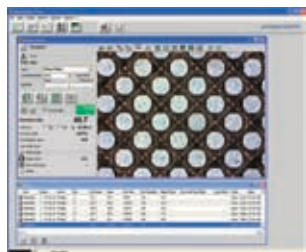
vipFLEX

The Solution for Flexo Plate
Quality Control



Take control of your flexo plate production quality

Accurate printing starts with accurate plates. And, when it comes to flexo print production, vipFLEX is the one solution capable of handling all of your plate production quality assurance needs. This complete solution includes the vipFLEX desktop flexo plate reader for transparent flexo plates, PlateQuality Flexo software for analyzing and storing plate quality information, and the vipFLEX target to quickly and easily verify the accuracy of your plate reader. With vipFLEX, you'll no longer have to worry about stopping the press due to plate quality. The result – you'll save paper, ink and time while improving quality.



With its high resolution camera and sophisticated image recognition, vipFLEX can measure all types of transparent flexo plates. vipFLEX evaluates all of the important parameters, including dot area, dot size, screen ruling, edge factor, mottling and visual analysis, and supports both AM and FM screening, as well as Samba (hybrid screening). Plus, vipFLEX can be used to measure paper, film and aluminum plates.

The included PlateQuality Flexo software puts all the information you need to analyze plate quality and document your quality process at your fingertips. Automatically store measurement values, plate images and plate characteristic curves, as well as job data (including plate type, chemistry data, screening, imager and more), customer data and reference values. This information can be printed in a variety of formats, easily retrieved from the database at any time or exported to another program for more in-depth analysis. With PlateQuality Flexo Software, you'll have everything you need to document quality and meet ISO standards – all in a single place.



SPECIFICATIONS

Functions	<ul style="list-style-type: none"> • Dot area (%) • Dot size (dot diameter) • Screen ruling (lines/cm or lines/inch) • Line Width • Edge factor • Dot void factor • Mottle • Visual analysis • Digital zoom (2x) • Characteristic curve 																
Measurement Samples	<ul style="list-style-type: none"> • Flexo plates • Masked plates • Offset plates (positive and negative) • Paper • Film (positive and negative) • Plastic foils • AM screening • FM, Samba and Hybrid screening (highlights and shadows only) 																
Measurement Technology	<table border="0"> <tr> <td>Sensor</td> <td>RGB Camera 640 x 480</td> </tr> <tr> <td>Resolution Sensor</td> <td>10'000 ppi</td> </tr> <tr> <td>Target size</td> <td>Approx. 1.5 x 1.1 mm (0.6 x 0.43 inch)</td> </tr> <tr> <td>Illumination</td> <td>RGB (Auto Selection)</td> </tr> <tr> <td>Screen Ruling Range (AM)</td> <td>32-60 l/cm</td> </tr> <tr> <td></td> <td>80 - 150 lpi</td> </tr> <tr> <td>Repeatability</td> <td>+/- 0.5%</td> </tr> <tr> <td>Measurement Time</td> <td>< 1 sec.</td> </tr> </table>	Sensor	RGB Camera 640 x 480	Resolution Sensor	10'000 ppi	Target size	Approx. 1.5 x 1.1 mm (0.6 x 0.43 inch)	Illumination	RGB (Auto Selection)	Screen Ruling Range (AM)	32-60 l/cm		80 - 150 lpi	Repeatability	+/- 0.5%	Measurement Time	< 1 sec.
Sensor	RGB Camera 640 x 480																
Resolution Sensor	10'000 ppi																
Target size	Approx. 1.5 x 1.1 mm (0.6 x 0.43 inch)																
Illumination	RGB (Auto Selection)																
Screen Ruling Range (AM)	32-60 l/cm																
	80 - 150 lpi																
Repeatability	+/- 0.5%																
Measurement Time	< 1 sec.																
Interface	USB																
Power Supply	Powered by USB. No additional charger or battery required																
Mechanical Data	<table border="0"> <tr> <td>Dimensions (height x width x length)</td> <td>16.5 x 32 x 52 cm (6.5 x 12.6 x 20.5 in)</td> </tr> <tr> <td>Weight</td> <td>8.5 kg (18.7 lb)</td> </tr> </table>	Dimensions (height x width x length)	16.5 x 32 x 52 cm (6.5 x 12.6 x 20.5 in)	Weight	8.5 kg (18.7 lb)												
Dimensions (height x width x length)	16.5 x 32 x 52 cm (6.5 x 12.6 x 20.5 in)																
Weight	8.5 kg (18.7 lb)																
System Requirements	<table border="0"> <tr> <td>Operating system</td> <td>Windows 2000 or XP</td> </tr> <tr> <td>Processor</td> <td>Minimum 700 Mhz</td> </tr> <tr> <td>Available RAM</td> <td>64 MB</td> </tr> <tr> <td>Available hard disk space</td> <td>50 MB</td> </tr> <tr> <td>Screen resolution</td> <td>1024 x 768, 24bit color</td> </tr> <tr> <td>Data interface</td> <td>2 USB ports (device and dongle)</td> </tr> </table>	Operating system	Windows 2000 or XP	Processor	Minimum 700 Mhz	Available RAM	64 MB	Available hard disk space	50 MB	Screen resolution	1024 x 768, 24bit color	Data interface	2 USB ports (device and dongle)				
Operating system	Windows 2000 or XP																
Processor	Minimum 700 Mhz																
Available RAM	64 MB																
Available hard disk space	50 MB																
Screen resolution	1024 x 768, 24bit color																
Data interface	2 USB ports (device and dongle)																



United States: t: +1 800 622 2384 f: +1 845 561 0267
 t: +1 845 565 7660
 Switzerland: t: +41 44 842 24 00 f: +41 44 842 22 22
 United Kingdom: t: +44 1928 280050 f: +44 1928 280080
 Germany: t: +49 61 0279 570 f: +49 61 0279 5757
 Italy: t: +39 0574 527755 f: +39 0574 527671

France: t: +33 161 062 180 f: +33 134 620 947
 China, Hong Kong: t: +852 2368 7738 f: +852 2368 6717
 China, Shanghai: t: +86 21 5868 4348 f: +86 21 58684358
 t: +86 21 6267 6180
 Russia: t: +7 095 502 92 65 f: +7 095 502 92 67

gretagmacbeth.com
 xrite.com

© 2006, GretagMacbeth. All rights reserved. Part. No. 98.56.12